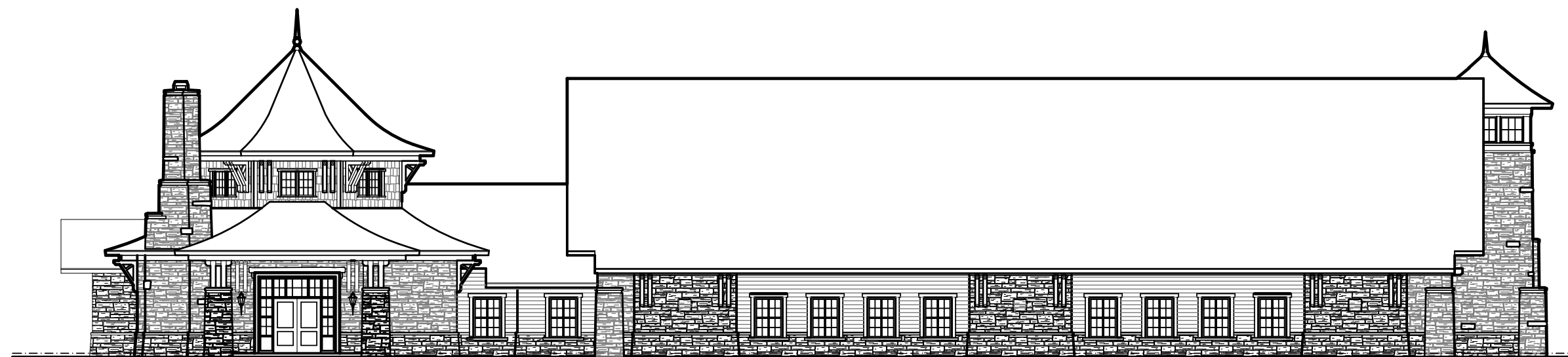


# FUQUA & PARTNERS ARCHITECTS

100 Church Street, Suite 700  
Huntsville, Alabama 35801  
Phone: (256) 534-3516  
Fax: (256) 533-4605  
www.fuqaarchitects.com



LEFT SIDE ELEVATION - PHASE I

SCALE 1/16" - 1'



FRONT ELEVATION - PHASE I

SCALE 1/16" - 1'

## PROVIDENCE BAPTIST CHURCH

PROJECT NO: 16610

DRAWN:

DATE: April 8, 2011

CHECKED:

FILE NAME: -

SHEET