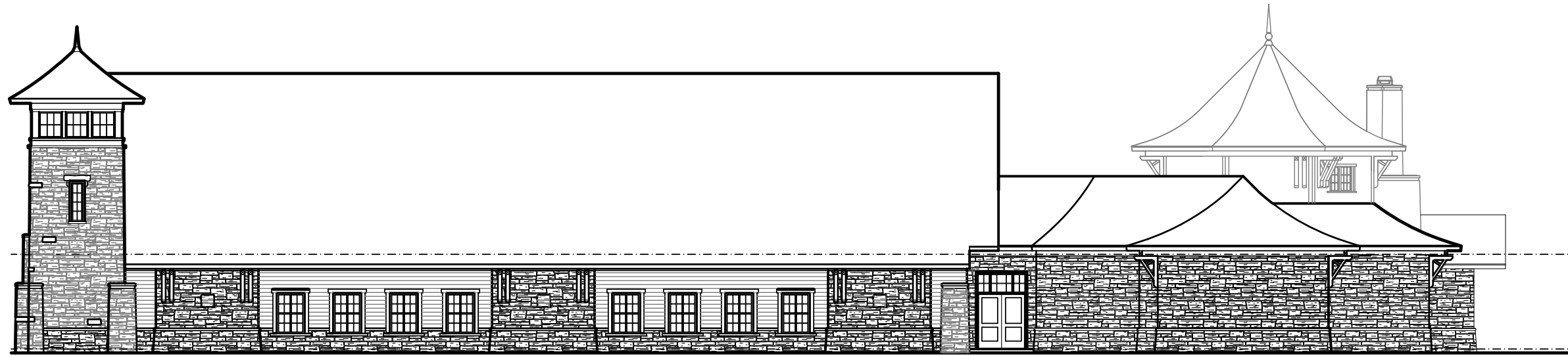


FUQUA & PARTNERS ARCHITECTS

100 Church Street, Suite 700
Huntsville, Alabama 35801
Phone: (256) 534-3516
Fax: (256) 533-4605
www.fuquaarchitects.com



RIGHT SIDE ELEVATION - PHASE I

SCALE 1/16" = 1'

PROVIDENCE BAPTIST CHURCH

PROJECT NO: 16610

DRAWN:

DATE: April 8, 2011

CHECKED:

FILE NAME: -

SHEET